

Discover Nantou — Sustainable Travel

NANTOU



Being as a
Sustainable
Traveler

Love the
Earth,
Starting
from
Nantou



Sustainable
Travel
Begins with
You
and
Me



We promise

To tread this land with the lightest step
Leaving no trash behind, only stories

We choose green transportation

Seeing mountains and clouds through swaying buses

We choose to share meals and prosperity with locals

Every bite echoes the land's voice

We respect culture

Learning to listen through crafts and guided tours

We believe

Sustainability isn't a slogan
it's the accumulation of every choice

Let's Go!

County Magistrate Hsu sincerely invites you
To respect the local community and cherish Nantou
Making Sustainability a Daily Practice in Travel

County Magistrate

Hsu Shu-Hua

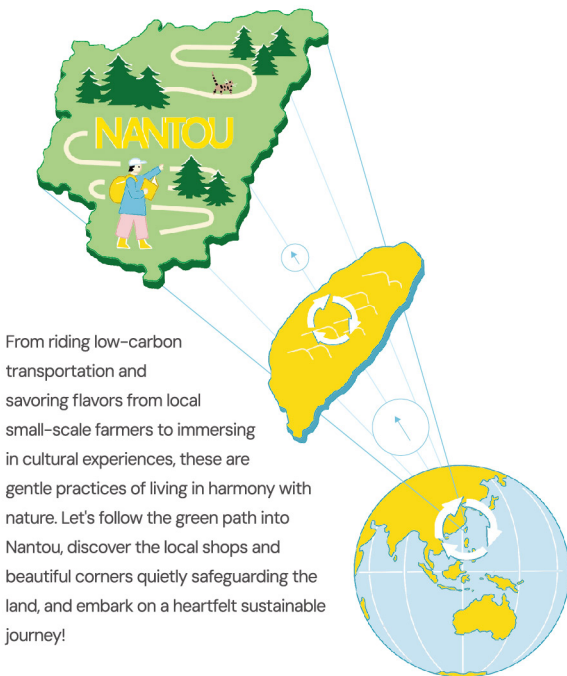


Traveler

Traveler's Signature for Statement of Sustainability

Nantou, blessed with abundant natural landscapes and serene scenery, is a city where nature composes a sustainable symphony. Many local businesses are actively safeguarding the environment through concrete actions. They uphold eco-friendly principles, respect local culture, and fulfill social responsibilities, crafting more welcoming and low-carbon travel experiences for visitors.

Sustainable tourism: Quietly changing the world



Choose Green Transportation



Take one of the 16 Taiwan Tourist Shuttle routes, public transit, or an electric car rental to reduce your carbon footprint and add a touch of green to your journey.



Experience Local Culture



Participate in local resident-led tours, markets, or handicrafts workshops to connect with the land and its people beyond mere sightseeing.

For example, taking Taiwan Tourist Shuttle from Taichung High Speed Rail Station to Sun Moon Lake reduces per-person carbon emissions by nearly 2 kilograms—equivalent to driving nearly 10 kilometers less by car.

Support Sustainable Businesses



With over 300 certified sustainable businesses in Nantou, you can choose eco-friendly dining and lodging options. Enjoying nature means also joining in the effort to protect the environment sustainably.

Take Beautiful Memories Home



During your travels, remember to bring your own water bottle and reusable shopping bag to reduce single-use items. Simple habits can alleviate a long-term burden on the Earth.

Discover Nantou: Sustainable Travel

In Nantou, the journey unfolds at its own rhythm—from mountains to lakes, from forests to villages. High mountains stretch silently beneath the starry sky, while lakes invite exploration by land, water, and air. Forest greenery and tea fragrance gently caress your senses, and the craftsmanship of 99 Peaks carries on the artisan's spirit. Golden terraces are watched over by the Xuan Tian Shang Di, and the Shuanglong Suspension Bridge arches like a rainbow across the sky. With every step, you immerse yourself in

01 Hehuanshan Starlight Scenery Route

Nantou's unique landscapes and stories.

02 Sun Moon Lake Tourism Route

03 Jiji Railway Heritage Route

04 Tea Fragrance & Craftsmanship Route

05 Art & Hot Springs Route

06 Baguashan Leisure Route

07 Jade Mountain Hot Springs Route

Seven thematic routes interweave local landscapes, memories, industries, and culture, offering an immersive journey through Nantou. Each step creates lasting impressions, creating a sustainable narrative that resonates with the gentle mountain breezes of Nantou.

Each route undergoes carbon footprint calculation, and an application can be made for a "Gold Standard Carbon Offset Certificate", documenting your journey's contribution to reducing carbon emissions for the planet.



Sustainable
Demonstration
Tours

1
day
Net-Zero
Tours

▼ Strolling Caotun-Craft Culture and Old Street Walking Tour

National Taiwan Craft Research and Development Institute → A Day

Coffee Roaster → Nantou Story Museum → Shiai Liao Restaurant

Handmade Lunch → Caotun Old Street Walking Tour → Rice Food

Culture Experience | Handmade Mochi → God of Wealth Temple | Pray
for blessings at Dunhe Temple

▼ Strolling Zhongxing New Village-Greenery Walking Tour

Zhongxing New Village Tandem Bike Ride → Lunch at Her Home Glasses

& Café → Provincial Government Walking Tour → Explore the Cultural
and Creative Cluster | No. 55 Bakery → Plant-Inspired Handcraft |

Kokedama Experience

Tea Fragrance &
Craftsmanship RouteHehuanshan
Starlight Scenery
RouteSun Moon Lake
Tourism RouteJade Mountain
Hot Springs
RouteBaguashan
Leisure
RouteJiji Railway
Heritage
RouteArt &
Hot Springs
Route

DAY 1

Yen's Tea
GardenKingtaiwan
HotelXitrou Nature
Education
AreaHoward Resort
Xitrou Hotel

Haodai Village

DAY 2

Colorful Cotton
HomeYuan Tai
Bamboo Art
Studio
Zhushan Old
Street

DAY 1

Guangxing
Paper MillGreen House
RestaurantTaomi Leisure
Agriculture
(Paper Dome)Cona's
Chocolate CastleJin Du
RestaurantCheng Wan
Grand Hotel

DAY 2

Sun Moon Lake

Song He Hotel
RestaurantSun Moon Lake
Shuishie Pier
Electric Boat
TourHUGOSUM
Black Tea
Garden

DAY 1

Plum Dream
Factory

Mal-u Kitchen

Rainbow
WaterfallDongpu
Suspension
BridgeTakula Hot
Spring Resort

DAY 2

Shuanglong
WaterfallShuanglong
Seven-Colored
Suspension
BridgeShuanglong
Tribe MealDanda Bunun
Ecotourism
ExperienceJilibanana
Tourist Factory

DAY 1

Fortress
Ecology
Walking TourMARSHA
MANORSongbailing
Visitor CenterShuijing
Leisure Farm

Xianghe Hotel

DAY 2

Zhongliao's
Artists

Nantou Winery

Shuter
Babubuza
Dream Factory

DAY 1

Jiji Town
Cycling TourThirteen Kilns
Brick Kiln
Restaurant

HERBAL

Taiwan
Endemic
Species
Research
InstituteFullon Posttel
Shuili

DAY 2

Yinniang
Cocoa
WorkshopShuili Snake
Kiln Ceramics
Cultural ParkCedar Tea
HouseChecheng
Wood Industry
Exhibition HallChecheng Old
StreetChelungpu
Fault
Preservation
Park

DAY 1

Guoxing
Township
Farmers'
AssociationNuomi Bridge
Leisure
Agriculture AreaGuoxing
Private Hakka
Restaurant

Xinfeng Farm

Huisun Forest
Area

DAY 2

99 Peaks Helium
Balloon Park
99 Peaks Forest
TrailShiai Liao
RestaurantNational
Taiwan Craft
Research and
Development
Institute

JAOZOO PARK

NSTC Nantou Sustainable Tourism Campaign Businesses

Featured Agricultural Tours

Green Mark Hotels

Environmental Education Venue

Eco-Friendly Restaurant

Green Food

Green Dining Guide (Green Dining Declaration Restaurant)

Green Mark Restaurants

GTS Good Travel Seal

Natural Landscape

DarkSky International

Relaxing, Eco-friendly, and Natural Travel

From mountains to lakes, from forests and natural landscapes to historical sites, each part of Nantou shines in its own way. Thanks to eco-friendly transportation options, getting around is effortless and burden-free—perfectly embodying the spirit of sustainable travel. For a different pace, you can follow low-carbon routes into the tranquil woods of Xitou, or visit Zhushan to experience the harmony of bamboo crafts and the aroma of tea. In Nantou, culture and nature intertwine throughout the journey, weaving together a gentle and sustainable charm unique to this mountain region.

Take the Taiwan Tourist Shuttle and Head Out to See the Stars

Transfer from Qingjing to a shared bus to enter Hehuanshan Dark Sky Park, where you can look up at the starry sky in an environment with low light pollution and low carbon emissions, experiencing the results of the county government's efforts to combine low-carbon transportation with in-depth eco-tourism.

A Cultural Journey Weaving Through Mountains and Lakes

The Taiwan Tourist Shuttle and Sun Moon Lake Ropeway can take you to the Formosan Aboriginal Culture Village. Use green transportation to explore the Indigenous community's living spaces, experiencing cultural tours, handicraft workshops, and performances. You can also cycle or stroll along the Sun Moon Lake trail or the Jiji Green Tunnel, feeling the freedom and relaxation of low-carbon movement at your own pace, allowing culture and environmental sustainability to naturally converge on your journey.

Take the Taiwan Tourist Shuttle and Enjoy the sustainable lifestyle

The Taiwan Tourist Shuttle's Nantou routes connect major scenic areas like Sun Moon Lake, Jiji, Xitou, Qingjing, Dongpu, Shuanglong and Ruilong Waterfall, and Songboling. It offers approximately 6 to 12 route services daily. Travelers can flexibly plan their itinerary and use the "Nantou Tourist Shuttle Pass" for unlimited rides within 3 days, experiencing the rhythm and beauty of sustainability while on the move.



**Taiwan
Tourist
Shuttle**
Service
Updates,
Routes
and Fares



**Nantou
Tourist
Shuttle
Pass**
3 Days
Unlimited
Rides

Shared
TransportationTaiwan Tourist
Shuttle Routes

- Xitou Line (6883)
 Checheng Line
 Xitou - Sun Moon Lake
 Beigangxi Line
- Xitou Line (Route 15)
 Sun Moon Lake Line (Express)
 Shuanglong Line
 Baguashan Line
- Qingjing Line
 Qingjing Line (via Puli)
 Ruilong Waterfall Line
- Dongpu Line
 Puli Line
 Jiji Line

Sun Moon Lake Line

New Era Art Park, HOHOCHA / Sun Moon Black Tea Factory, Formosan Aboriginal Cultural Village, Sun Moon Lake, Paper Dome, Sun Moon Lake Antique Assam Tea Farm, Dong Feng Black Tea Menor

Xitou Line

Chelungpu Fault Preservation Park, Yoshan Tea, Colorful Cotton Home, Wangcheng Umbrella Tourist Factory, Ever Shine Lantern Tourist Factory, Xitou Nature Education Area, Sun Link Sea Forest and Nature Resort

Qingjing Line

Tai Yi Eco-Leisure Farm, Qingjing Farm, Qingjing Skywalk, NTU Meifeng Farm, Hehuanshan Dark Sky Park

Checheng Line

Sun Moon Lake, Shuili Snake Kiln Ceramics Cultural Park, Checheng Old Street, Checheng Wood Industry Exhibition Hall

Shuanglong Line

Checheng Old Street, Checheng Wood Industry Exhibition Hall, Shuili Snake Kiln Ceramics Cultural Park, Shuanglong Seven-Color Suspension Bridge Park

Jiji Line

Jiji Green Tunnel, Tian Xing Kiln, Wuchang Temple, Taishun Covered Bridge, Ming Hsin Academy, Taiwan Biodiversity Research Institute, Jijibanana Tourist Factory

Ruilong Waterfall Line

Zhushan Old Street, Ruilong Waterfall

Baguashan Line

Zhongxing New Village, Taiwan Mochi Museum, Shuter Babuza Dream Factory, Houtanjing Sky Bridge, Shoutian Temple, Fingertea Story House

Beigangxi Line

National Taiwan Craft Research and Development Institute, JOJOZOO PARK, Nuomi Bridge Leisure Agriculture Area, Atayal Resort

Puli Line

New Era Art Park, Puli Winery

Dongpu Line

Checheng Wood Industry Exhibition Hall, Checheng Old Street, Shuili Snake Kiln Ceramics Cultural Park, Plum Dream Factory, Dongpu Suspension Bridge, Dongpu Hot Springs

Taiwan
Tourist
Shuttle

Explore the
Beauty of
Nantou with
Sustainable
Travel

Rest in the Sustainable Land

Nantou is so beautiful that leaving feels difficult. The first step is to stay at a sustainable hotel, choosing local, low-carbon accommodations that radiate positive ripples for the environment, society, and economy. By reducing the impact on natural tourist sites, travelers are healed while the land is restored.

**Accommodations
Certified by the
Following
Are Worthy of
Sustainable
Exploration!**



CU-GSTC Sustainable Hotels

These are distinctive accommodations that have obtained international sustainability certification. They are built with low-carbon materials, energy-saving facilities, and environmentally friendly water systems to create a green lodging environment. They also incorporate local Nantou ingredients and community culture to promote sustainable tourism experiences. Travelers can enjoy slow travel in an atmosphere where nature and culture seamlessly blend.



Green Mark Hotels



Certified by the Ministry of Environment, these Green Mark Hotels use energy-efficient equipment, promote eco-friendly lodging programs, encourage guest participation in sustainability, and support environmental protection and community development.

Nantou Good Food B&B Program



Based on the concept of “sustainable dining,” these accommodations combine lodging with local cuisine. The hosts take travelers to visit farms, taste self-grown vegetables, fruits, and tea cuisine, and participate in food education classes, experiencing eco-friendly agriculture and hands-on activities. Beyond the stay, travelers can gain a deeper appreciation of the authentic beauty of the Nantou land.

In the Night, Nantou Still Shines with the Light of Sustainability

Low-Carbon Accommodation

Nantou's nights feature the whispers of the mountains and the light and shadow by the lake. The daytime itinerary concludes, while sustainable tourism doesn't stop. Through designed activities, experiences are extended—from night-time stargazing tours, firefly ecology, and cultural walks, to mindful activities like frog watching, singing bowl healing, meditation, or tea ceremony—all of which allow for continuous coexistence with the environment in the rhythm of the night.



Green Accommodation | Let Rest Become a Gift to the Land

Accommodations across the region are gradually implementing energy-saving equipment, using local ingredients, and practicing carbon-reduction management, allowing travelers to stay in nature in a more friendly way. Travelers can choose lodging with sustainability labels and environmental education to feel the breath of nature and the warmth of humanity.

Dark-Sky Friendly | Let the Starry Sky Return to the Embrace of the Night

The County Government is promoting the "Dark Sky Friendly" concept, hoping to extend the low-light pollution, low-energy consumption lodging model to various townships, allowing more travelers to experience the tranquility of returning to nature between the starlight and mountain shadows. Whether taking a stargazing bus or listening to the stories and legends of Nantou on a B&B rooftop, they can leave a lasting, sustainable light in Nantou's night sky.

Start with one meal, practice sustainability



A Vegetarian Journey from Farm to Table

Vegetarianism is not just a dietary choice, but a philosophy of living in harmony with the land. In the hills of Zhushan and Lugu, bamboo farmers harvest sweet and juicy bamboo shoots of various types, including Makino bamboo shoots, Oldham bamboo shoots, Ma bamboo shoots, and winter bamboo shoots. When blanched they are fragrant, and when simmered, they are rich in the sweet moisture of the mountains. The water bamboo dishes in Puli are best when stir-fried in season; simply blanched, they highlight their sweetness, reflecting the freshness nurtured by the water source. The mushrooms widely produced in the Yuchi and Puli areas emit a natural, rustic aroma whether steamed with rice, boiled in soup, or braised. If you're looking for crispness, you certainly can't miss the high-mountain vegetables from Ren'ai and Xinyi. Nantou's vegetarian food embodies the rhythm of the mountains and the warmth of human connection, allowing taste buds to return to nature and allowing travelers to experience the authentic look of sustainability one meal at a time.

It is a
culinary
experience
but more so,
a lifestyle.

Want to try the good flavors nurtured in the mountains? We have collected the Nantou Vegetarian Dining Map to explore fresh and delicious food in Nantou and experience the culture of vegetarian cuisine.



Eating vegetarian one day a week can reduce carbon emissions by approximately 101.4 kg per year



Friendly Tea Sharing × Reusable Cup Initiative



Let's connect the traveler's sustainable actions with "the warmth of a cup of tea." Friendly tea sharing stations and reusable cup rental services are available throughout Nantou. Travelers can reduce the use of single-use cups every time they refill their water, making drinking tea the gentlest response to the environment.



Every single-use paper cup avoided reduces the world's carbon emissions by 0.011 kg.



Chinese
only



Local Dining

Enjoy the abundant fruits and vegetables produced by local Nantou small farmers, shortening the food mileage and eating fresher food.



Eco-Friendly Tableware

Bring your own utensils, containers, and bags, or purchase local eco-friendly products, reducing single-use items and being kind to the Earth.



Mindful Ordering

Order just the right amount, avoid leftovers and waste, making food reduction more comfortable.



Eco-Friendly Restaurants, Green Dining Tables

Choose sustainable restaurants to enjoy eco-friendly ingredients, experience the dining, and feel the benefits of eco-friendly dining.



Please look for government-approved dining labels such as "Eco-Friendly Restaurant," "Green Dining Table," "Green Dining Guide," and "Tian Mama." Starting with environmental friendliness, they provide travelers with more eco-friendly and low-carbon dining options, bringing green living into daily life and seeking a dining attitude where deliciousness and sustainability coexist.



Sustainable Souvenirs

Every souvenir nurtured by Nantou's mountains carries the craftsmanship of artisans and the memory of the land. Choosing sustainable shops, supporting local production, and using circular packaging not only brings joy to the journey but also gently gives back to the environment and the land.

Sustainable Souvenirs ! Starting with the Sincerity Rooted in the Land



From tea leaves and coffee grown using natural farming methods, to sustainably farmed fruits, honey, and plum products, and further to pastries, dried fruits, and bamboo handicrafts made with the spirit of local production and local sales—each product represents the respect of Nantou people for the land and their commitment to sustainability. Packaging design also uses reduced-plastic materials or recycled paper, practicing environmental friendliness and social responsibility in the details.

Additionally, the County Government is actively promoting the "Taste of Nantou" brand, collaborating with Carrefour, major beverage and retail channels to allow the county's high-quality agricultural specialties to enter the mainstream market, embodying the concept of "support local, develop sustainably" through concrete actions.



Local Co-Prosperity ! The Power of Brand Connection

Souvenirs are the continuation of a journey, and even more so, a lifestyle choice—choosing to buy local, support young farmers, and reduce the carbon footprint. What travelers bring home is not only gifts but also a thoughtful connection to the land.



Chinese
only

Souvenirs

Nantou Local Agricultural Specialties

Agricultural specialties from Nantou's thirteen townships embody the nourishment of mountains and land, extending the beauty of the journey!

Nantou City

Orchid Wild orchid Green Mountain Tea Tomato Loofah
Lychee Pineapple Papaya Longan Pomelo Persimmon

Puli Township

Red Sugarcane Water Bamboo Shoot Passion Fruit Shiitake Mushroom
Radish Rice Noodle Shaoxing Wine Taiwan Jewel Orchid

Caotun Township

Rice Tobacco Betel Nut Lychee Job's Tears Grape Anthurium
Banana Atemoya Sugar Apple

Zhushan Township

Winter Bamboo Shoot Spring Bamboo Shoot Makino Bamboo Shoot
Ma bamboo shoots Oldham Bamboo Shoot Dried Bamboo Shoot
Pickled Bamboo Shoot Shredded Bamboo Shoot Bamboo Shoot
Preserved Bamboo Shoot Zhushan Red Sweet Potato Cummingcordia
Oolong Tea Jin Xuan Tea Jade Oolong Tea Tomato Kyoho Grape

Jiji Township

Glutinous Rice Lychee 20th Century Guava
Mountain Banana Kyoho Grape Dragon Fruit Sunflower

Mingjian Township

Zhuoshui Rice Pineapple Common Cat's Tail Ginger
Water Spinach Yam Tea Leaves

Zhongliao Township

Banana Honey Tangerine Sweet Persimmon Longan
Citrus Lychee Pomelo Erjian Tea Bamboo Shoot

Lugu Township

Dong Ding Oolong Tea Bamboo Shoot Honeywort
High-Quality Rice Ashitaba Trout Tea Plums

Shuili Township

High-Mountain Tea Green Plum Aiyu Jelly Chinese Orchid
Washington Navel Orange October Longan
Honey Tangerine Pilose Antler Banana
Peach Kyoho Grape Camellia oil

Yuchi Township

Sun Moon Lake Black Tea Daylily
Shiitake Mushroom Orchid Eggplant
Taiwan Jewel Orchid Ponkan Loofah Betel Nut

Guoxing Township

Green Plum Loquat Strawberry Citrus Honey Star Fruit Guava
Sweet Peach Seedless Lemon Jackfruit Atemoya Sugar Apple
Banana Shiitake Mushroom Tea Leaves Pilose Antler

Xinyi Township

Green Plum Kyoho Grape Red Plum Guava Tomato Yushan Tea
High-Mountain Vegetable Stone Bamboo Shoot Wild Vegetable Sweetfish
High-Grade Cut Flower Camellia Oil Aiyu Jelly

Ren'ai Township

Taiwan Shoveljaw Carp Rainbow Trout Local Chicken Peach New Century
Pear Apple Plum High-Mountain Tea Cabbage Jade Cabbage
Honeywort Iceberg Lettuce Coffee Fragrant Sticky Rice

Explore the
local
agricultural
specialties,
and unique
processed
goods can be
bought.





Publisher | Hsu Shu-Hua
Issuing Unit | Nantou County Government
Executing Unit | Corporate Synergy Development Center
Publication Date | November 2025

The information contained in this publication is subject to change after the date of issue. Please refer to the respective unit's official website for the most current information.

AD

